



Atlantic States
Marine Fisheries
COMMISSION

Atlantic States Marine Fisheries Commission

An Overview of State/ASMFC Management

Presented by

Bob Beal

- Atlantic Coastal Fisheries Cooperative Management Act
- Commission Management Approaches
- Conservation Equivalency
- Recreational Data Collection



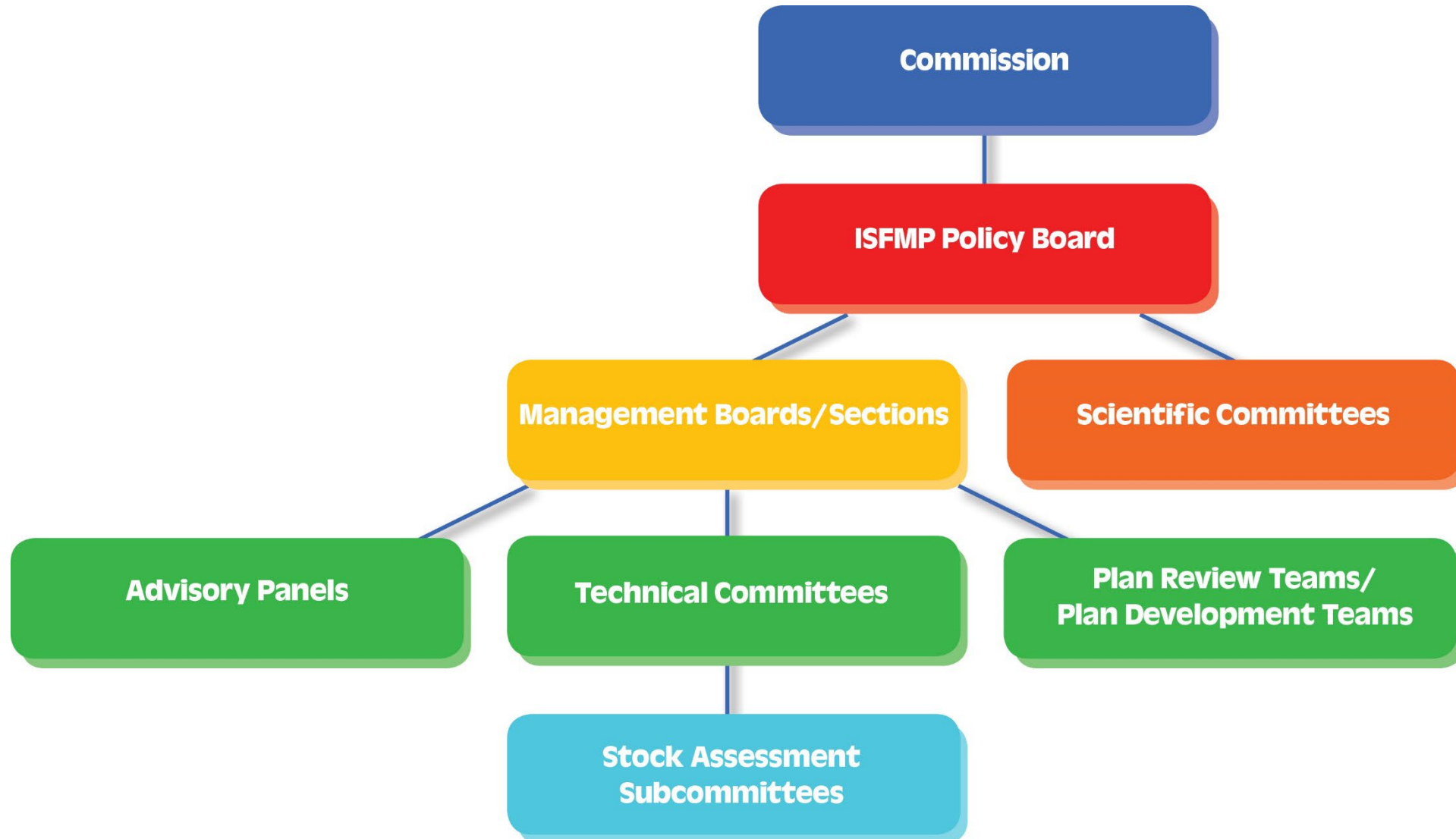


- Formed in 1942 – Interstate Compact
- 15 Atlantic coast states, ME – FL
- Deliberative forum for states
- Cooperative management of transboundary resources
- **State waters 0 – 3 miles from shore**

*Vision: Sustainable and Cooperative
Management of Atlantic Coastal Fisheries*

Atlantic Coastal Fisheries Cooperative Management Act (ACFCMA)

- General standards for fisheries management
- States implement regulations (ASMFC – Non-regulatory)
- State compliance tied to conservation standards
 - Potential for Secretarial pre-emption
- Work cooperatively with federal partners on shared resources
- Authorizes funding to support
 - ASMFC & state management
 - Federal partners



One State – One Vote Principle



Blaik Keppler
SCDNR



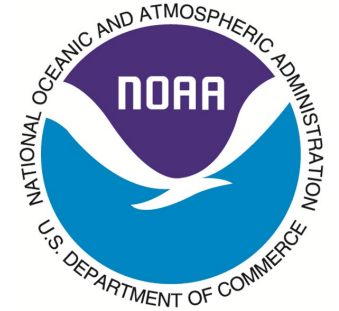
Sen. Ronnie Cromer
Legislative Appt.



Dr. Malcolm Rhodes
Governor Appt.

Other Voting Members

- NMFS
- USFWS
- Potomac River Fisheries Commission
- District of Columbia
- Regional Management Councils

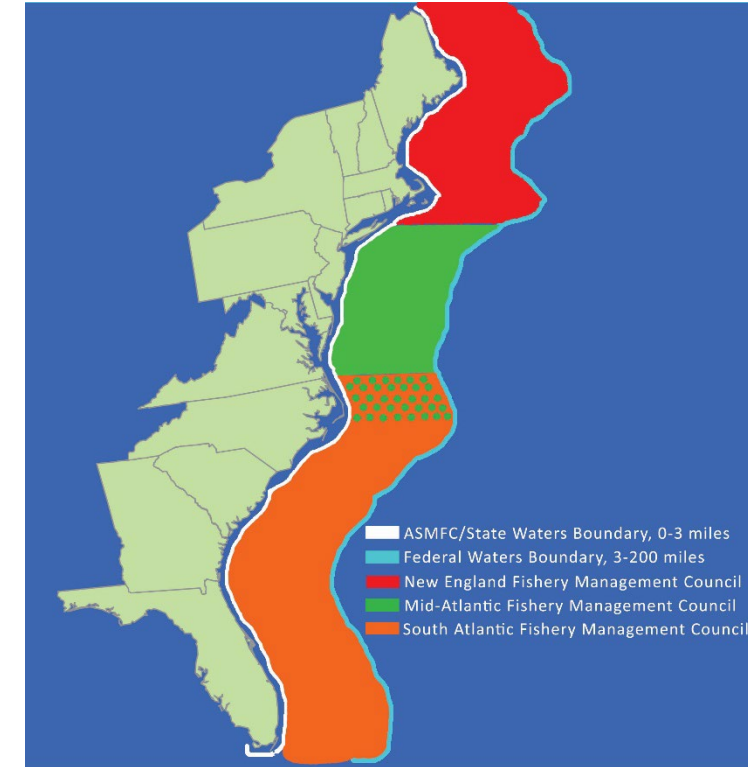


27 Species/Species Groups Under Management



Fisheries Management Approaches

- **Commission Managed Species**
- **Cooperative/Complementary Managed Species**
- **Jointly Managed species**



Commission Managed Species

- Interstate Fishery Management Plan
- No Federal Fishery Management Plan
- Limited EEZ Management Measures
- American eel, Atlantic menhaden, horseshoe crab, northern shrimp, tautog, weakfish, Atlantic croaker, black drum, spot, spotted sea trout, Atlantic sturgeon



Photo ©Chris Bowser, NYSDEC

- Interstate FMP/No Federal FMP
 - Red Drum and Striped Bass – EEZ closure to harvest and possession
 - Cobia (Atlantic Migratory Group) – Size and possession limits, Quota
 - Shad and River Herring – Bycatch caps
 - American Lobster/Jonah Crab – Extensive management under ACA



Cooperative/Complementary Management

- Interstate and Federal FMPs
- Council(s) generally take primary role
 - Atlantic herring
 - Winter flounder
 - Spiny dogfish
 - Spanish mackerel
 - Coastal Sharks – HMS



Photo © Bryan Frazier, SCDNR

- Interstate and Federal FMPs
 - Majority of Measures Identical across FMPs
 - Complex Management Process
 - Joint Meetings (2+ times/year)
 - Requires Identical Motions by MAFMC and ASMFC
-
- Summer Flounder, Scup, Black Sea Bass, and Bluefish

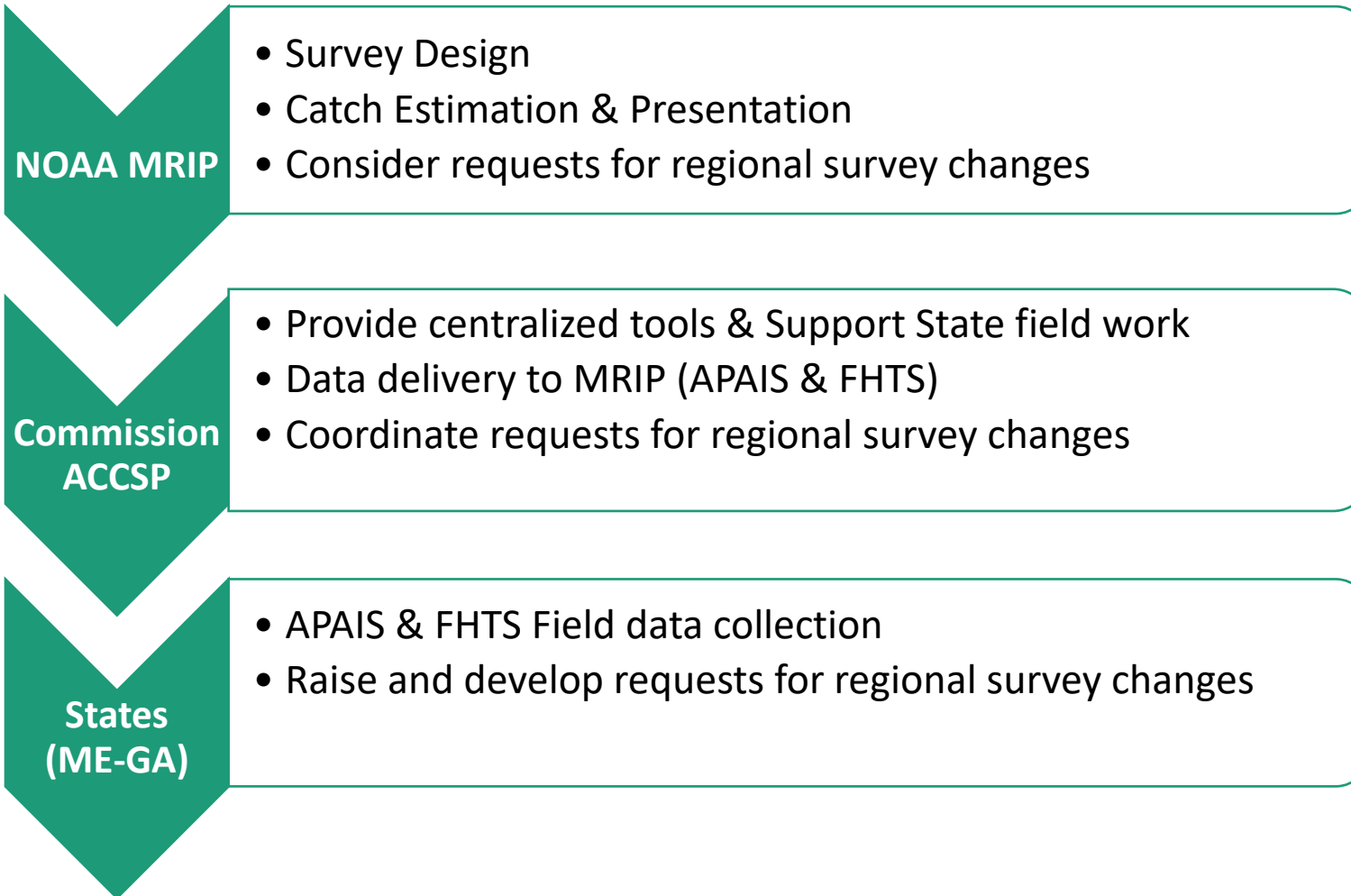


Photo © John McMurray

“Actions taken by a state which differ from the specific requirements of the FMP, but which achieve the same quantified level of conservation for the resource.....”

- Provides Flexibility to the States
- Integral Part of the Commission Management Process
- Defined Review and Approval Process
- Flexibility Varies by FMP and Stock Status

MRIP – ASMFC – State Partnership



MRIP works with regional implementation teams (ACCSP) to consider regional needs, adjust existing design or pilot test new aspects of general survey

- SEFSC supporting personnel in NC, SC, GA to collect at-sea observer data on charter boats (2025-2027)
- Data collection on paper, state entry into SC format Access DB
- ACCSP implementing data warehouse for states to upload data from each state's access DB (early 2026)
- Observer data within ACCSP to be centrally available to partner agencies for fisheries assessment and management

- Methodology to combine mandatory electronic logbooks with APAIS intercepts of charter boats
- Developing for MRIP Certification – starting contract work on 2019-2024 existing data to refine the math and address peer review comments
- Intent is certify a method once, and have various logbook programs implement one at a time, as they are ready
- Next steps likely late 2026 or 2027

- Replacement: Complete transition from MRIP to ____
 - LA Creel model
 - All species, all year
- Supplement: Maintain / extend MRIP sample sizes plus
 - Add MRIP compatible FL SRFS model
 - Reef species, all year
- Notes:
 - Use of a previously MRIP Certified design would speed implementation timeline
 - Consider transition year and calibration needs (Gulf examples)



Questions???

45-Inch Red Drum Caught on Cape Cod

📅 September 4, 2015 👤 moldychum

